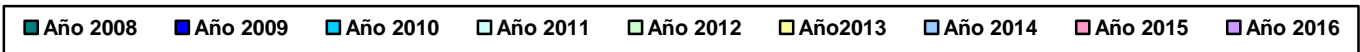
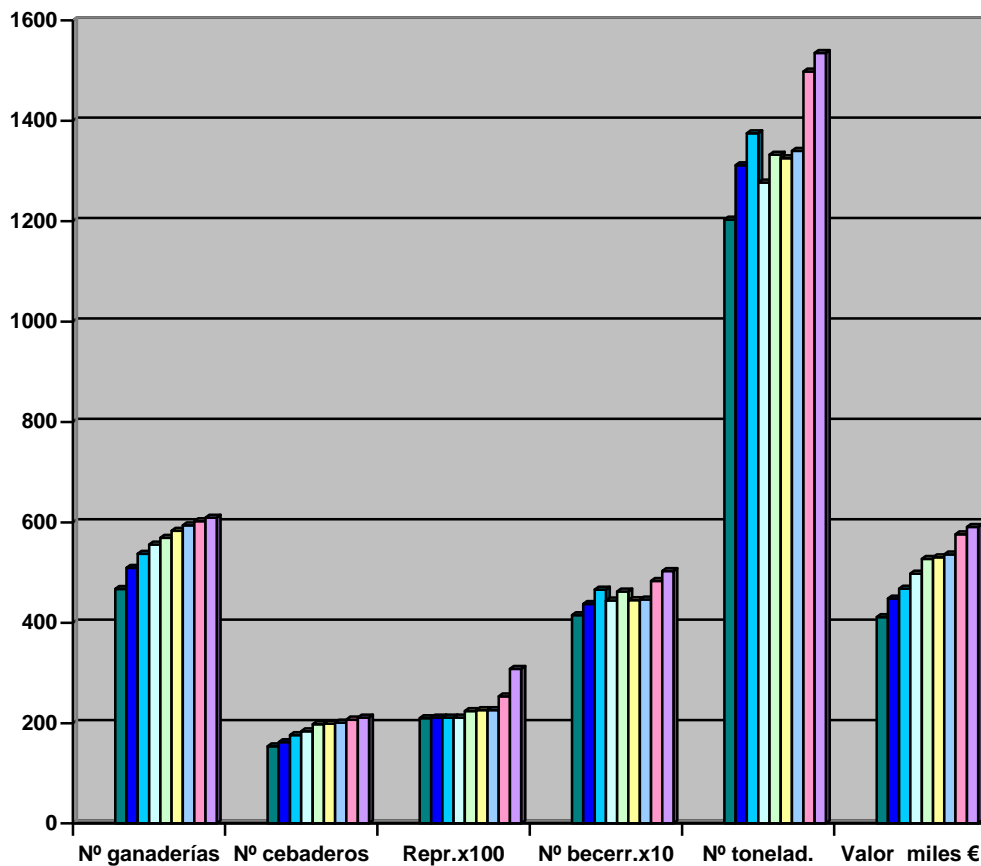


RESUMEN GRÁFICO DE EVOLUCIÓN

CARNE DE AVILA



| TABLA DE EVOLUCIÓN CARNE DE AVILA 2008/2016 | | | | | | | | | |
|--|-------------|-------------|-------------|-------------|-------------|-------------|-------------|-------------|-------------|
| CARNE DE AVILA | 2008 | 2009 | 2010 | 2011 | 2012 | 2013 | 2014 | 2015 | 2016 |
| Nº GANADERÍAS | 467 | 509 | 537 | 556 | 569 | 583 | 594 | 602 | 609 |
| Nº CEBADEROS | 154 | 162 | 176 | 184 | 198 | 199 | 201 | 207 | 211 |
| Nº REPRODUCTORAS | 21.000 | 21.100 | 21.100 | 21.100 | 22.400 | 22.600 | 22.600 | 25.318 | 30.847 |
| Nº ANIMALES MARCADOS | 4.150 | 4.370 | 4.662 | 4.448 | 4.625 | 4.449 | 4.468 | 4.832 | 5.033 |
| Nº TONELADAS | 1.203,5 | 1.311 | 1.375 | 1,325 | 1,332 | 1,325 | 1,340 | 1,498 | 1,535 |
| VALOR x 1.000 € | 4.115,97 | 4.483,62 | 4.675,9 | 4.902,5 | 5.274,7 | 5.301,1 | 5.361,6 | 5.767 | 5.910 |